

## 2 BOX RANCH: PLAN NOTES

- WINDOWS HEIGHTS SHOWN ON THIS PLAN ARE FOR 8' FLAT CEILINGS.
- DOOR AND WINDOW HEIGHTS FOR 9' CEILING ARE LISTED BELOW.

8' CEILING	9' CEILING
60" WINDOW	72" TALL
36" WINDOW	48" TALL
18" WINDOW	30" TALL
6'-8" S.G.D.	6'-8" or 8'-0" S.G.D.

## GENERAL NOTES

- TRANSOMS ABOVE DELUXE ENTRY SYSTEMS ARE ONLY AVAILABLE W/ 9' FLAT CEILINGS.

## ABBREVIATIONS

P = PANTRY  
 OH = OVERHEAD CABINET  
 DBL S/R = DOUBLE SHELF AND ROD  
 SGL S/R = SINGLE SHELF AND ROD  
 E/P = ELECTRICAL PANEL  
 DW = DISHWASHER  
 W = WASHER  
 D = DRYER  
 WH = WATER HEATER  
 FAU = FORCED AIR UNIT  
 SGD = SLIDING GLASS DOOR

## SALES ORDER SYMBOLS

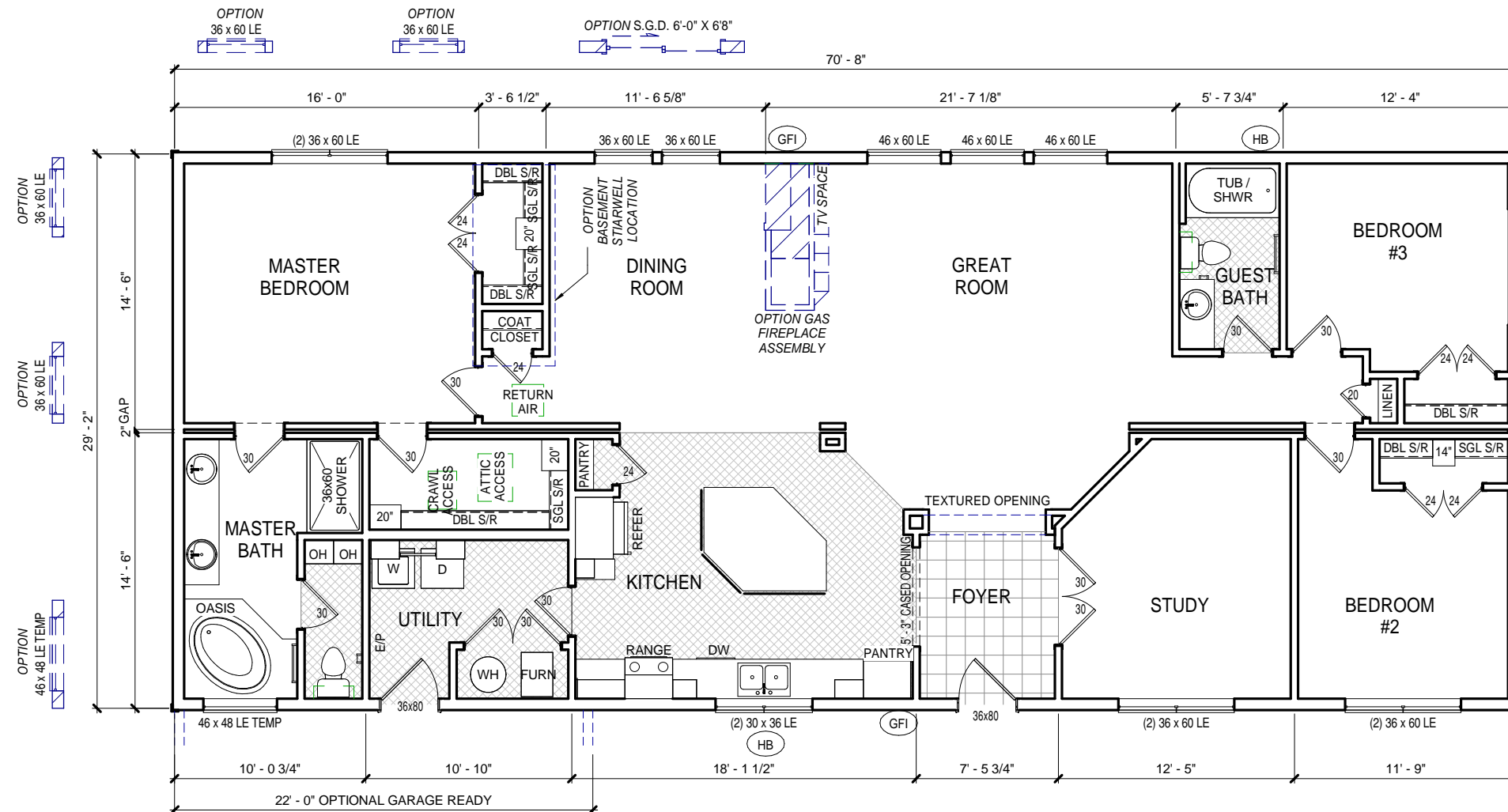
- (GFI) GFI RECEPTICAL
- (GFI/E) GFI IN EAVE
- (#) ORDER NUMBER
- (HB) FROST FREE HOSE BIB
- (R) RECESSED CAN LIGHT
- (P) PENDANT LIGHT
- (TV/PH) TV/PHONE RECEPTICAL
- (PH) PHONE JACK
- (SW) SWITCH LOCATION
- (W&C) WIRE AND CAP
- (W&B) WIRE & BRACE FOR FAN

## HATCH PATTERN LEGEND

- [Hatch] LINOLEUM
- [Hatch] TILE
- [Hatch] NON-FULL HEIGHT WALL
- [Hatch] ANGLED WALL

## GROSS AREA SCHEDULE

Level	Square Feet
L1-Deck	2061 SF



L1-Sales Floor Plan  
 N.T.S.



5556 FEDERAL WAY  
 BOISE, ID 83716

GUERDON ENTERPRISES, LLC. (GUERDON HOMES), CLAIMS EXCLUSIVE RIGHTS TO ALL INFORMATION, INCLUDING ALL CONCEPTS AND CONVENTIONS, CONTAINED IN THESE DRAWINGS. THE INFORMATION CONTAINED IN THESE DRAWINGS SHALL BE HELD CONFIDENTIAL AND CANNOT BE DISCLOSED TO ANY OTHER PERSON OR ENTITY WITHOUT THE EXPRESS WRITTEN CONSENT OF GUERDON ENTERPRISES, LLC. THESE DRAWINGS MAY NOT BE REPRODUCED, MODIFIED, OR DISTRIBUTED IN ANY FORM FOR ANY REASON WITHOUT EXPRESS WRITTEN PERMISSION FROM GUERDON ENTERPRISES, LLC. COPYRIGHT C 2007

Project Name/Number:  
**2R-3071-09 - SERIAL #**

State:  
**STATE**

Project Status:  
**PRELIMINARY**

Client Name:  
**CUSTOMER**

Project Address:  
**STREET ADDRESS CITY, STATE**

### REVISION SCHEDULE

REV #	TITLE

Sheet Title:  
**SALES FLOOR PLAN**

Standard Module/Detail #:

Current Revision:

Project Engineer:  
**ENGINEER**

Drawn By:  
**Author**

Scale:  
**1/8" = 1'-0"**

8 1/2" x 11" Print Scale:  
**N.T.S.**

Sheet Number:

**S-FP**